

International Protective Coating Services

International:
more than what's
in the can

Coatings failures can be **unpredictable** and **expensive**

Why risk the success of the coating application on critical areas?

Interplan

Integrity fully under your control

Interskill

Making you the expert in the field

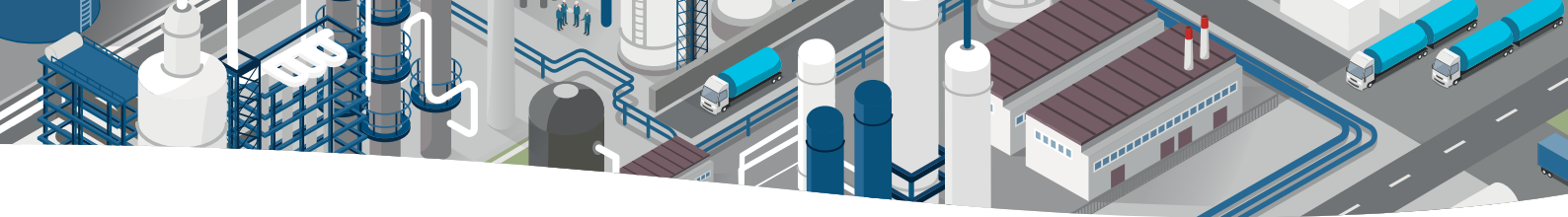
Intersure

Expert support when and where you need it

Equipment Services

Providing you with the right tools for any job





Interplan

Integrity fully under your control

A robust digital cloud-based inspection program giving owners full visibility of their facilities condition. Collected data is interactive and allows owners to view and maintain the health of their facility. Accurately planning and estimating necessary repairs, finding design weaknesses in your coating specification, and maximizing the life of your asset.



Interskill

Making you the expert in the field

Coating technology is an ever-evolving field of highly technical solutions solving complex problems. Ensure your coating applicators are trained by the best experts in the field and eliminate doubt and uncertainty from your application.



Intersure

Expert support when and where you need it

Bring peace of mind to your next project. Allow our technical service team to support you, acting as both an advisor and technical support for applicators, as well as documenting the installation of our products.



Equipment Services

Providing you with the right tools for any job

Having the correct tools to apply and inspect coatings can make the difference between a job done and a job done right. As application and inspection technology advances every year you can rely on International to equip you with the most up to date equipment and the access to experts to ensure your job is a success.



See how the experts at International can help you with your inspection, application and total project management.