

# Westin Diplomat resort and spa

## Case study

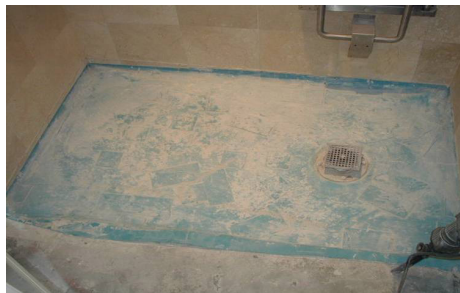
**Focus products:** Intercrete® 4850, Intercrete® 4842

**Location:** Hollywood, Florida

**Client:** Westin Hotels & Resorts

**Contractor:** Associates Roofing & Waterproofing

**Summary:** Waterproofing of bathroom enclosures in a prestigious hotel resort



### Background

Owing to a combination of inadequacies in design and poor workmanship, it was soon evident that the bathroom areas of the 5 Star 998 room Diplomat Hotel complex were suffering from water leakage through to the floors below.

The Client sought an immediate and cost effective solution which did not release unpleasant fumes into the atmosphere and which could be reliably installed by a competent waterproofing contractor within the shortest possible time.

### The solution

After due consideration of a range of tanking systems, a 2mm layer of Intercrete 4842 was chosen because it provided waterproofing properties equal to at least 2 metres of concrete. After removal of the existing marble back to the sub-base, and priming with Intercrete 4850, a single application of Intercrete 4842 was all that was needed. Intercrete 4842 is installed directly on to a saturated surface to achieve high bond which typically exceeds the internal strength of the parent concrete. Intercrete 4842 will stretch up to 100% to accommodate future cracking.